

# AKA DESIGN

DESIGNER GENES NOT REQUIRED!

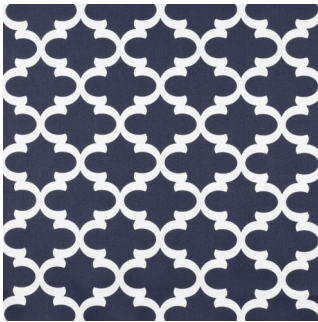
## EASY THROW PILLOW MIXING FORMULA

Throw pillows are to a room like earrings are to an outfit. They're generally one of the last items added to a space, but they can make a huge difference—unless of course you don't know how to mix them with style.

Here's a cheat sheet to help you avoid the matchy-matchy look and add a little oomph to your throw pillow pairings!

### Pattern + Solid + Whimsical

Choose one from each category



PATTERN

Examples: Stripes, Quatrefoil, Trellis, Floral, Chevron, Polka Dots, Plaid, Paisley, Scroll, Gingham, Damask, Ikat, Scales, Lattice, etc.



SOLID

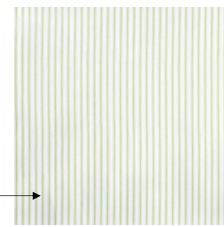
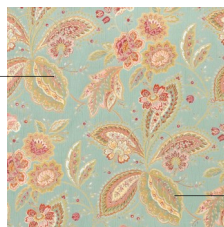
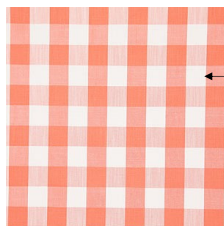
Examples: Any solid color in your palette, OR a miniscule pattern that looks like a solid from a distance.



WHIMSICAL

Examples: Typographic words, sayings, mustaches, screen-prints, photos, watercolor, whimsical, fun, etc.

TRY THIS TRICK: USE A PATTERN THAT HAS ALL OF THE COLORS OF YOUR ROOM IN IT TO TIE THE WHOLE ROOM TOGETHER!



*DESIGNER SECRET: Feather pillows last much longer than any old throw pillow you can find at your local Target or Walmart. Plus they fluff right back up when smushed by kids, dogs and husbands! From now on either buy your throw pillows with feather inserts already inside or just buy covers and get yourself feather throw pillow inserts to replace the foam. Ikea has the cheapest feather inserts around. No more flat or misshapen throw pillows!*